

PERFORMANCE ENHANCEMENTS

Sustainable Solutions is Our Ongoing Commitment

Concept Part Solutions is dedicated to extending the lifetime of your maturing semiconductor manufacturing equipment. As your toolsets age and new processes emerge, we pursue every opportunity through our Continuous Improvement Program (CIP) to offer important enhancements that increase the reliability, productivity, and performance of your install base.



Concept One Dielectric

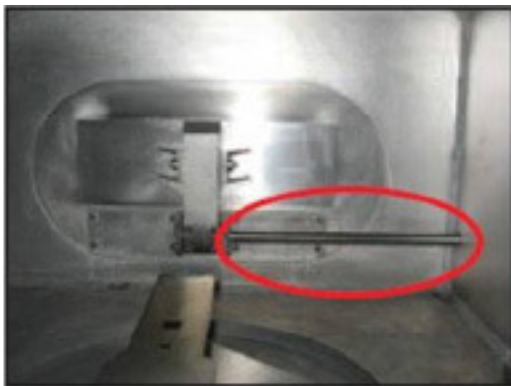
Load Lock Door Shaft



Current Load Lock Door with 2-piece shaft causes unwanted rubbing and particle shed

Reducing wafer defects is a vital component for ensuring today's aging semiconductor equipment meets the increasing demands of a more complex manufacturing environment. The Concept One Load Lock Door Shaft enhancement can provide up to a 30% reduction in defects occurring in the load-lock caused by friction of components.

The original Load Lock Door Shaft for the Concept One system consists of two separate aluminum parts. A U-joint inside the Load Lock connects both parts allowing the two items to rub against each other as the door opens and closes. This produces unwanted particles to shed-off into the Load Lock. The upgrade design replaces the two separate pieces with a one-piece Load Lock door shaft eliminating the rubbing action that generates these unwelcome particles.



Load Lock Door with improved One Piece Shaft eliminates rubbing and particle shed

Installing the Load Lock Door Shaft - For Concept One systems shipped before March 1996, installation requires the drilling of four holes and taping them into the Load Lock wall to properly complete the upgrade. For systems shipped after March 1996, drilling and taping the Load Lock wall is not necessary. Concept Part Solutions offers a Load Lock Door Drill Kit, PN 04-047558-00, which may be purchased separately.

Upgrade Benefits

- Eliminates particle-shed in the Load Lock
- Reduces PM time associated with original door shaft
- Improves vacuum sealing from the load lock to chamber
- Lowers overall Cost of Ownership



Corporate Headquarters
Concept Part Solutions, Inc.
2047 Zanker Road
San Jose, CA 95131
Tel: 408.855.8585
www.conceptpartsolutions.com

Concept One 150mm and 200mm
Load Lock Door Shaft

**Get More Information on
System Performance Enhancements**

To find out how to improve the performance and productivity of your CPS supported systems, call your local CPS Sales and Service Office for complete ordering information, or visit www.conceptpartsolutions.com.

System Prerequisites:

For systems built prior to March 1996, Kit 0-047558-00, KIT, LL DOOR DRILL TOOLS, will be required

Ordering Information:

Load Lock Door Shaft

05-306158-00

Some Upgrades may require an audit of your System; Contact your local CPS Representative to verify the Upgrade Kit before ordering.